

MUHAYYER ŞARKI

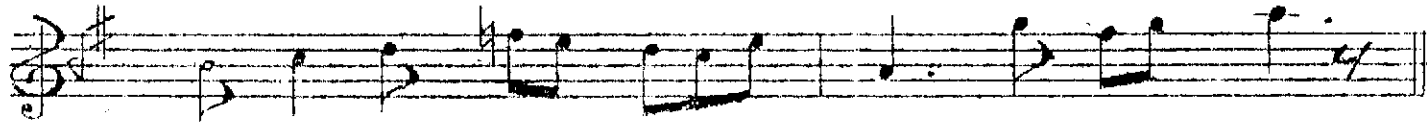
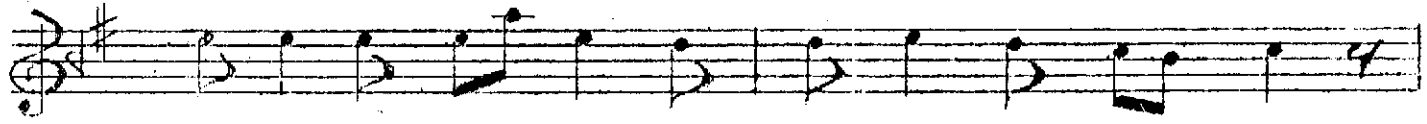
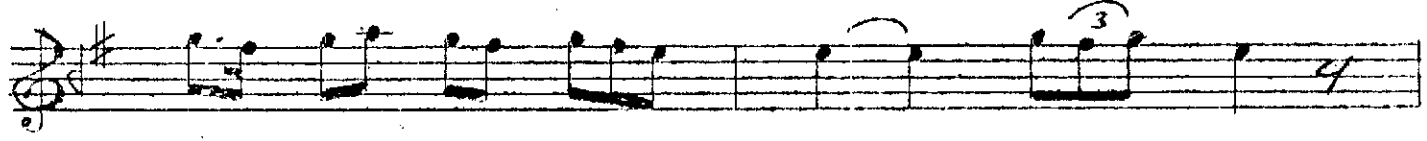
Beste:BAHRİ ALTINTAŞ

(Çağlayan sular gibi kalplere akışın var) Güfte:ZİYA POLAT

AKSAK
(♩=200)



(ARANAĞME)



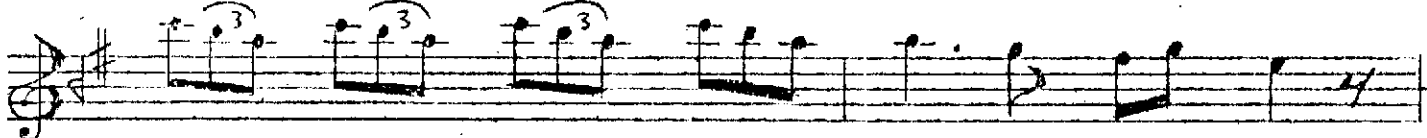
ÇAĞ LA YAN SU LAR Gİ Bİ
GÖZ LE RİN SAN Kİ CEY LAN



KALP LE RE A Kİ ŞİN VAR
DU DA ĞİN GON .. CA BİR GÜL



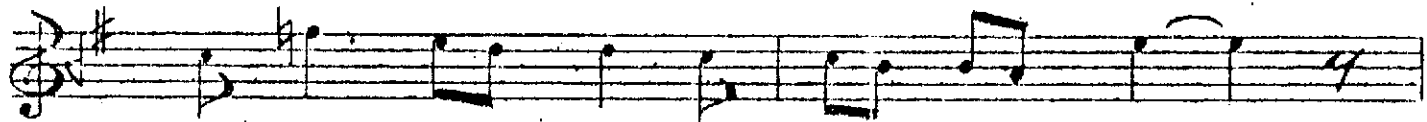
KALP LE RE A Kİ ŞİN VAR
DUDA ĞİN GON CA BİR GÜL



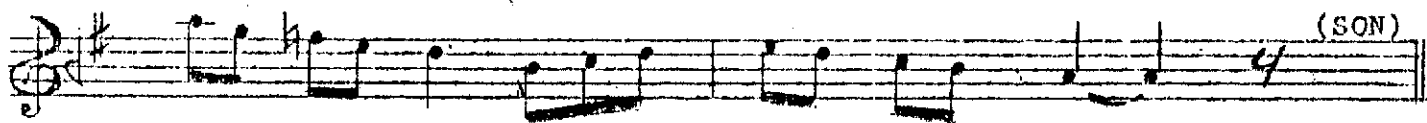
(SAZ)



FÜ SUN KÂR GÖZ LERİN LE
MİS KO KAN YA NAK .. LA RİN

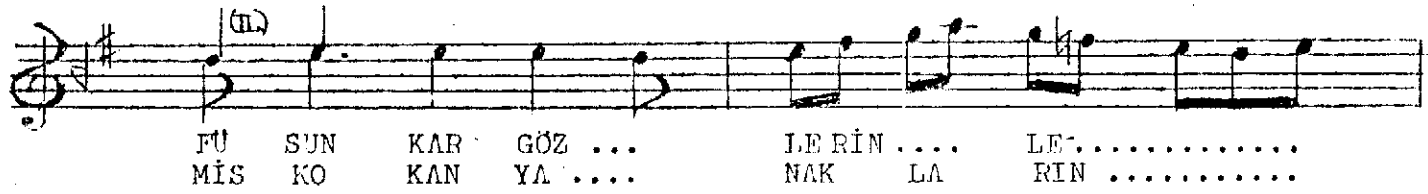
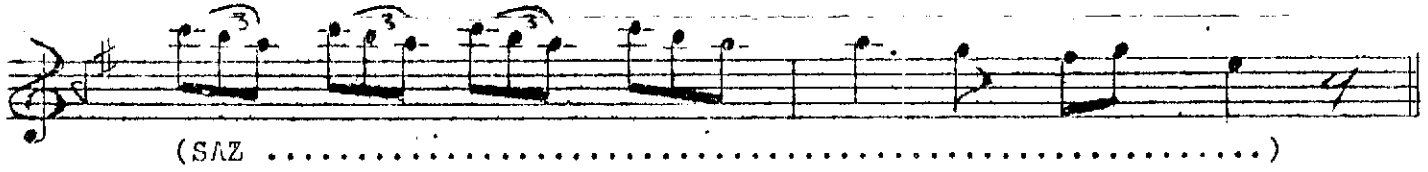
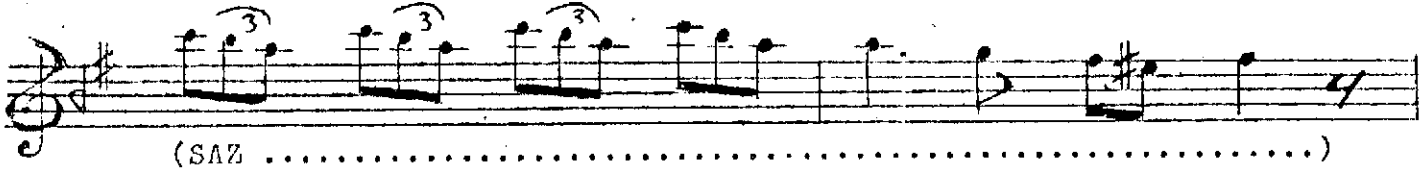


NE TAT LI BA Kİ ŞİN VAR
ME NEK ŞE LA LE SÜN BÜL



NE TAT LI BA Kİ ŞİN VAR
ME NEK ŞE LA LE SÜN BÜL

(SON)



ÇAĞLAYAN SULAR GİBİ KALPLERE AKIŞIN VAR
FÜSUNKÂR GÖZLERİNLE, NE TATLI BAKIŞIN VAR
GİRDİĞİN GÖNÜLLERDE, YUVALAR YAPIŞIN VAR
FÜSUNKÂR GÖZLERİNLE, NE TATLI BAKIŞIN VAR

GÖZLERİN SANKİ CEYLÂN, DUDAĞIN GONCA BİR GÜL
MİS KOKAN YANAKLARIN, MENEKŞE, LÂLE, SUNBÜL
NAĞMELİ HOŞ SESİN VAR, ÖTÜYOR SANKİ BÜLBÜL
MİS KOKAN YANAKLARIN, MENEKŞE, LÂLE, SUNBÜL...

(ZİYA POLAT)